

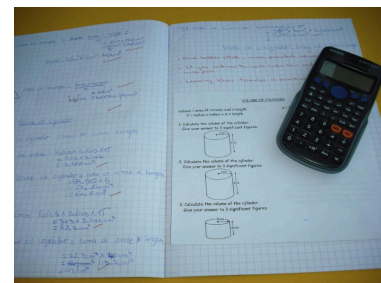


Maths Department



The Maths Department at Chesterton Community Sports College is one of the leading and largest departments in the school, with six full time teaching staff and a dedicated member of Learning Support. We are looking to increase the department to seven full time members of staff as the school continues to be oversubscribed.

We are driven by the desire to ensure that every child achieves their full potential and we are passionate about making 'Mathematicians of the Future.' For this reason, we set very high standards for staff to ensure that all pupils are making expected progress and above, whilst engendering intrigue and an enjoyment in Mathematics.



The department has six Maths classrooms that are fully equipped with a large TV display, WiFi connection and the latest Apple Mac technology, including Apple TV. All staff at CCSC have their very own personal Mac Book Air and iPad: these are essential tools in the development of modern education. Combined with this, all KS4 pupil have personal iPads that can be used in lessons to facilitate and engage

learning further. Alongside these, the Maths Department has access to two sets of department iPads that further support learning in KS3. As we strive to create strong independent learners, we push all KS3 students towards using the Maths Whizz package that the school subscribes to.

The GCSE Maths results have been excellent over many years. We produce excellent results either in line or above National Average, and this has continued with the new specification and grading system. The Maths department contributed greatly to the schools overall results, which have been fantastic for years, and especially good within the new Progress 8 measure.



In line with the school's innovative curriculum, the Maths Department run a two-year KS3 programme. At KS3 we follow 'Oxford University Press Specification,' with an emphasis on Mastery: this provides a thorough foundation of content and skills in readiness for KS4. Students start KS4 in Year 9 and embark on the GCSE 9-1 Maths programme following the OCR Specification. Every student in KS4 follows the same scheme of work, split into Higher and Foundation tiers. Staff and pupils have access to a shared resource bank to complement our existing resources and to promote learning beyond the classroom. As a collaborative department, new staff are strongly encouraged to involve themselves in the further development of this collective resource. Both students and staff have access to Kerboodle resources in both KS3 and KS4.

